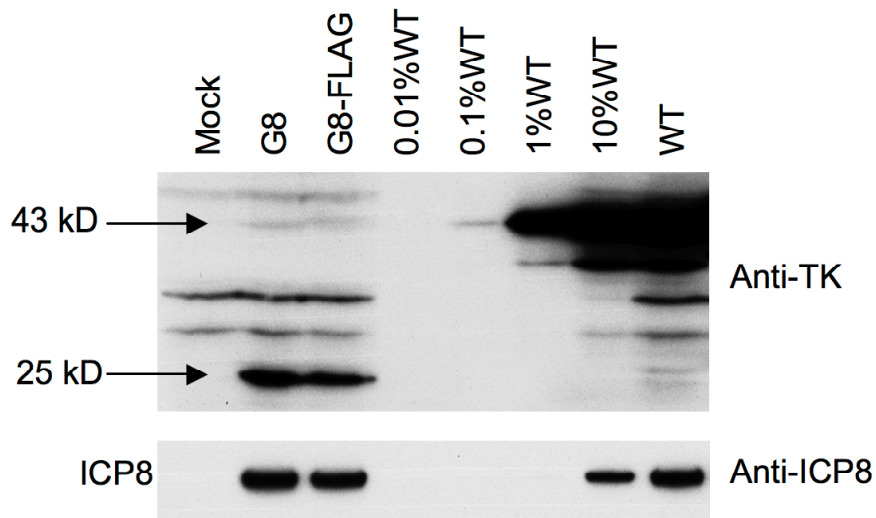


Supplemental Figure 1



Supplemental Figure 1. Comparison of untagged G8 and G8-FLAG in Western blot analysis using anti-TK antibody showing full-length (43 kD) as well as N-terminal TK polypeptides (25 kD) in infected cells (top) or using anti-ICP8 antibody (bottom). The viruses and dilutions used were indicated at the top of the panel. The arrows point to molecular weights interpolated from molecular weight markers run alongside the samples.